

### DUAL EGT/CHT 2-1/4"

Cat. No. 2DA1  
EGT 700-1700°F  
CHT 100-700°F  
Wt. 3 oz.



### EXHAUST GAS TEMP. 2-1/4"

Cat. No. 2A2 700-1700°F/  
400-900°C 4' send.  
Cat. No. 2A3 700-1700°F/  
400-900°C 1' send.



**OIL TEMP 2-1/4"**  
Cat. No. K35x 100-260°F  
Provides accurate  
monitoring of  
temperature

### 2-1/4" SQUARE STYLE TSO'd INSTRUMENTS

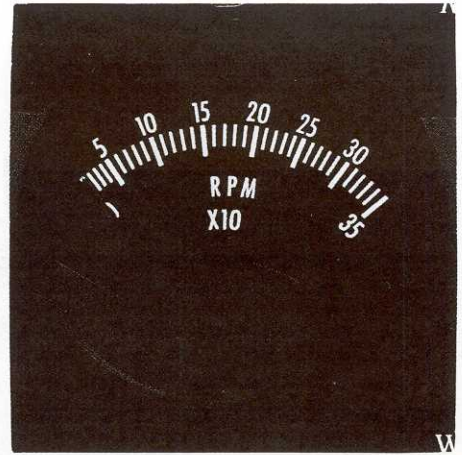
**EXHAUST GAS TEMP. 2-1/4" R: 700-1700°F**  
K28Px Sing. Cyl. Kit (4-900°C)  
K28PAx 2 Cyl. Kit  
K28PCx 4 Cyl. Kit  
K28PDx 6 Cyl. Kit  
K28PEx 8 Cyl. Kit

**CYLINDER HEAD TEMP. 2-1/4" R: 100-700°F**  
K29Px Sing. Cyl Kit (50-350°C)  
K29PAx 2 Cyl. Kit  
K29PCx 4 Cyl. Kit  
K29PDx 6 Cyl. Kit  
K29PEx 8 Cyl. Kit  
K31x CHT/EGT-Sing. Cyl. Kit 2-1/4" R: 700-1700°F (EGT)  
100-700°F (CHT)

K32x DUAL EGT-Sing. Cyl. Kit 2-1/4" R: 700-1700°F  
K34x AIR TEMP. 2-1/4" R: -40 to +120°F  
K30x CARB TEMP. 2-1/4" R: -50 to +50°C  
K33x DUAL CHT—Sing. Cyl. Kit 2-1/4" R: 100-700°F  
K36x WATER TEMP. 2-1/4" R: 100-260°F  
K35x OIL TEMP. 2-1/4" R: 100-260°F  
K37x FUEL PRESS. 2-1/4" R: 0-16 PSI  
K38x OIL PRESS. 2-1/4" R: 0-100 PSI  
K39x PRESSURE. 2-1/4" R: 0-80 PSI

### 24" SINGLE INSTRUMENTS

2A1 CHT 100-700°F/50-350°C, for 4' sender  
2A1-2 CHT 25-375°C, for 4' sender  
2A1-6 CHT 100-700°F/50-350°C, for 20" sender  
2A1-7 TEMP. 100-700°F/50-350°C, for 4' sender  
2A1 CHT 100-700°F/50-350°C, for 1' sender  
2A2 EGT 700-1700°F/400-900°C, for 4' sender  
2A2-1 EGT 100-1900°F/100-1000°C, for 4' sender  
2A2-2 EGT 400-900°C, for 4' sender  
2A2-3 EGT 700-1700°F/400-900°C, for 1' sender  
2A2-7 EGT 400-1600°F/200-850°C, for 4' sender  
2A2-9 EGT 200-1400°F, for 4' sender  
2A2-11 EGT 100-1900°F/100-1000°C, for 20" probe  
2A2-13 TEMP. 0-500°F, for 'E' wire 4' sender  
2A2-14 EGT 200-800°C, for 4' sender  
2A3-1 CARB. TEMP. -50 to +50°C  
2A3-2 AIR TEMP. -60 TO +100°F  
2A3-3 AIR TEMP. -40 TO +120°F  
2A3-1L CARB. TEMP. -50 to +50°C w/light on at 2-3°C  
2A3-1LA CARB. TEMP. -50 to +50°C w/adj. light  
2A4-1 TURBO-BOOST 0-30" vac., 0-20 psi  
2A5 VOLTMETER Volts DC 6-16  
2A5-1 VOLTMETER Volts DC 9-14  
2A5-4 VOLTMETER Volts DC 18-28  
2A5-2 VOLTMETER Volts CD 0-35  
2A6-1 AMMETER -30 to +30, uses shunt #293S  
2A6-2 AMMETER -60 to +60, uses shunt #296S  
2A6-3 AMMETER -100 to +100, uses shunt #237-4  
2A6-9 AMMETER 0-35, uses shunt #237-2  
2A6-11 AMMETER 0-60, uses shunt #237-3  
2A6-13 AMMETER 0-100, uses shunt #237-4  
2A6-14 AMMETER -150 to +150, uses shunt #237-5  
2A6-15 AMMETER -60 to +60, uses shunt #237-3  
2A6-16 AMMETER 0-20, uses shunt #237-1  
2A6-4 AMMETER -30 to +30, internal shunt  
2A6-5 AMMETER 0-20, internal shunt  
2A6-7 AMMETER -60 to +60, internal shunt  
2A6-22 AMMETER -30 to +30, uses shunt #237-2  
2A7 FUEL LEVEL, 240 ohm  
2A7-2 FUEL LEVEL, 30 ohm  
2A7-3 FUEL LEVEL, 90 ohm  
2A7-4 FUEL LEVEL, 78 ohm



### TACHOMETER 2-1/4"

Cat. No. 2AT5-2 5000 RPM  
Cat. No. 2AT3-2 3500 RPM

Frequency type provides top accuracy.  
Connects to 6V, 12V or Magneto primary  
using Fuse Adapter Cat. No. 381.  
Universal for 1 or 2 impulses (4 cyl.)

2A7-9 HYDRAULIC OIL LEVEL, 240 ohm  
2A7-S45 SLIP INDICATOR, no sender req.  
2A8MS OIL PRESS. 80# req. sender #287-11MS  
2A8-1MS OIL PRESS. 100# req. sender #387-11MS  
2A8-2MS FUEL PRESS. 80# req. sender #387-11MS  
2A8-8MS FUEL PRESS. 16# req. sender #387-13MS  
2A8-9MS COOLANT PRESS. 16# req. sender #387-13MS  
2A8-10MS OIL PRESS. 16# req. sender #387-13MS  
2A8-11MS PRESSURE 16# req. sender #387-13MS  
2A8-12MS PRESSURE 100# req. sender #387-11MS  
387-13MS pressure sender 16#  
387-11MS pressure sender 80# and 100#  
2A9-1 WATER TEMP., 100-260°F  
2A9-2 OIL TEMP., 100-260°F  
2A9-5 COOLANT TEMP., 100-260°F  
2A9-6 DIFFERENTIAL TEMP., 100-400°F  
2A9-7 TEMPERATURE, 100-260°F  
2A9-9 TEMPERATURE, 100-400°F  
2A9-10 HYDRAULIC OIL TEMP., 50-220°F  
2A9-11 TEMPERATURE 50-220°F  
2A9-12 TEMPERATURE 30-150°F  
2A9-13 TEMPERATURE 50-350°F  
2A9-15 AIR TEMPERATURE, 100-260°F  
2A9-16 HYDRAULIC OIL TEMP., 100-400°F

### 2-1/2" DUAL INSTRUMENTS

2DA1 EGT 700-1700°F/CHT 100-700°F  
2DA1-1 EGT 700-1700°F/AMP -60 to +60  
2DA1-2 EGT 200-850°C/CHT 25-375°C  
2DA1-3 EGT 700-1700°F/TEMP 100-260°F  
2DA1-5 EGT 700-1700°F/VOLT 7-17  
2DA1-6MS EGT 700-1700°F/PRESS., 16#  
req. sender #387-13MS  
2DA1-9 EGT 700-1700°F/AMP -60 to +60  
req. ammeter shunt #237-3  
237-3 shunt  
387-13MS Pressure sender  
2DA2 EGT 700-1700°F  
2DA2-1 EGT 400-1600°F  
2DA2-2 EGT 200-850°C  
2DA2-4 EGT 350-950°C  
2DA2-6 EGT 100-1900°F  
2DA2-7 EGT 100-1500°F  
2DA2-9 EGT 400-1600°F/Surface Temp. 400-1600°F