

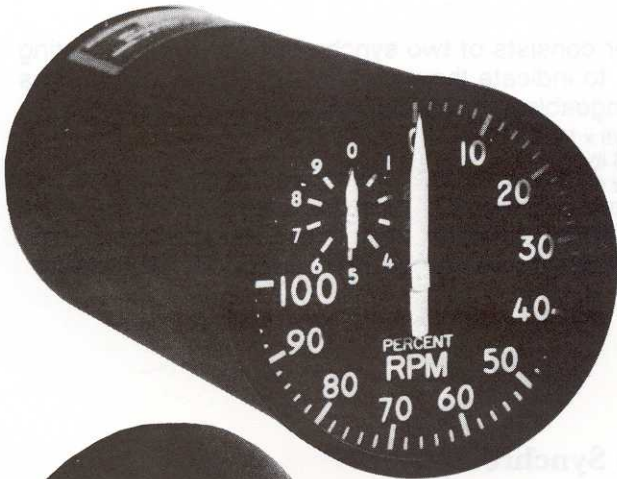
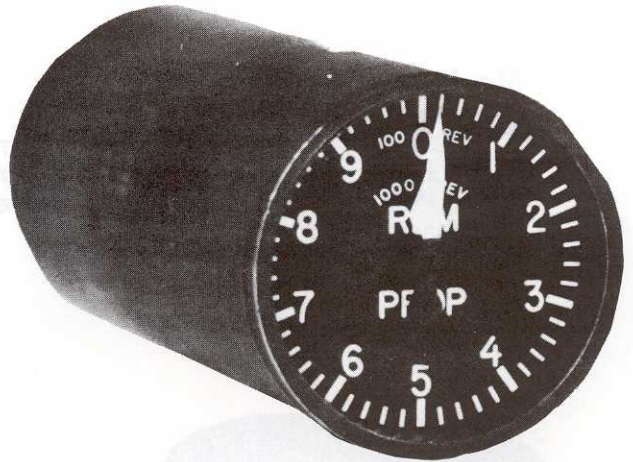
# ENGINE INSTRUMENTS

## Tachometer Prop. Single 2"

**Q-365**

This tachometer is a dual-pointer instrument in a hermetically sealed 2" diameter case. The dual pointers are mounted concentrically. One revolution of the large pointer indicates 1000 RPM, one revolution of the small pointer would indicate 10,000 RPM. MS28055 mounting flange is optional.

Dim: 2" diameter x 5"  
 Weight: Approx. .5 lb.  
 Power: Tach Generator  
 Range: 0 to 2500 RPM (2100 RPM equals 4200 C.P.M.)  
 Connector: MS3106A-10SL-3S

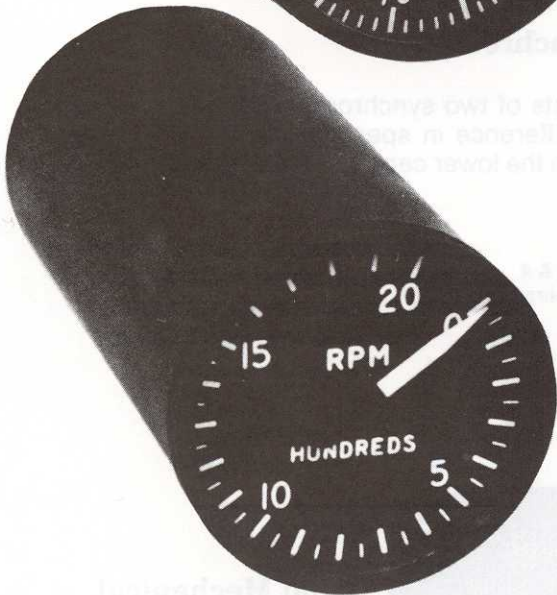


## Tachometer Percent Single 2"

**Q-366**

This tachometer is a dual-pointer instrument in a hermetically sealed 2" diameter case. The large pointer indicates 0 to 100% over a 270° scale. The small pointer indicates units from 0 to 10% per revolution for precise readings. MS28055 mounting flange is optional.

Dim: 2" diameter x 5"  
 Weight: Approx. .5 lb.  
 Power: Directly connected to generator.  
 Range: 0 to 100% (100% equals 4200 C.P.M.)  
 Connector: MS3106A-10SL-3S



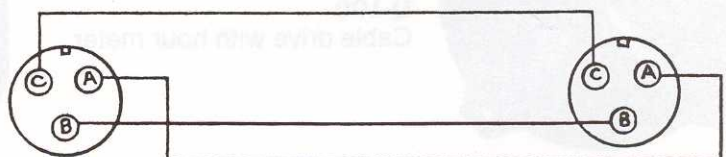
## Single Prop. Tach.

**Q-367**

A single pointer prop tach. indicator housed in a 2" diameter hermetically sealed case. Standard ranges 0-2000 or 0-4000. Three phase alternating current synchronous motor, powered by a remote tach generator. MS28055 mounting flange is optional.

Dim: 2" diameter x 5"  
 Weight: .7 lb.  
 Power: Tach. Generator  
 Connector: MS3106A-14S-52

### TYPICAL TACHOMETER SCHEMATIC BOTH CONNECTORS 3106-14S-2S



TACH GEN

INDICATOR