

REMOTE COMPASS INDICATOR

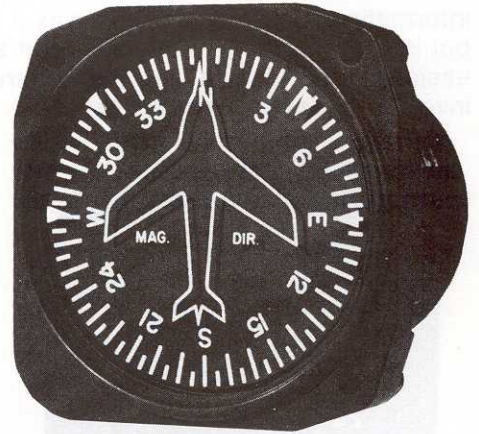
DIAL CONTEXT IS WHITE. YELLOW IF YOU REQUEST.

Rotating — 3"

F-111

The 3" indicator contains a servo-driven dial rotating behind an airplane symbol silk-screened to the rear surface of the cover glass. The indicator is not affected by local magnetic fields and may be mounted in any panel location.

Dim: 3-1/8 x 3-1/8 x 3-1/4
Weight: .5 lb. approx.
Power: 26 VAC 400 Hz. 1 ph.



Rotating — 2"

F-115

The 2" indicator contains a servo-driven dial rotating behind an airplane symbol silk-screened to the rear surface of the cover glass. The indicator is not affected by local magnetic fields and may be mounted in any position.

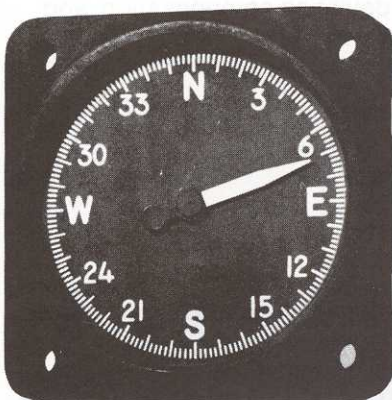
Dim: 2-1/4 x 2-1/4 x 3
Weight: .4 lb. approx.
Power: 26 VAC 400 Hz. 1 ph.

Fixed — 3"

F-100

The indicator contains a servo-driven pointer, and an independently mounted manually driven double pointer, rotating in front of a fixed 3" dial. The double pointer course indicator is set by a knob at the 7 o'clock position.

Dim: 3-1/8 x 3-1/8 x 3-1/4
Weight: .5 lb. approx.
Power: 26 VAC 400 Hz. 1 ph.
Interchangeable with AN5730-6, -7



Fixed — 2"

F-114

Same as F-115 except a servo-driven pointer rotating in front of a fixed 2" diameter dial. The indicator is not affected by local magnetic fields and may be mounted in any position.

Dim: 2-1/4 x 2-1/4 x 3
Weight: .8 lb. approx.
Power: 26 VAC 400 Hz. 1 ph.