

# ENGINE INSTRUMENTS

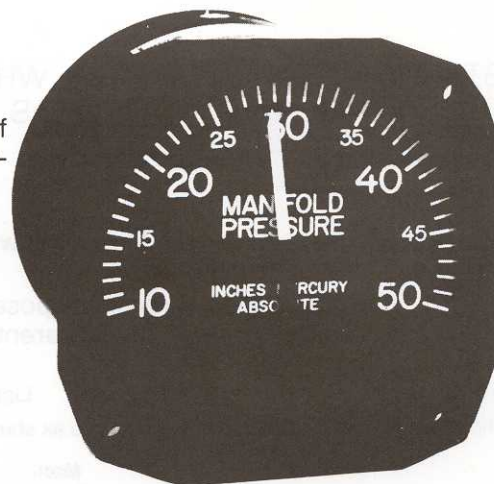
## Manifold Pressure Single

### N-1000

Manifold pressure is one of the factors required to obtain correct power setting of the aircraft engine. Indicator is temperature and altitude compensated. Interchangeable with AN5770-1.

Dim: 3-1/8 x 3-1/8 x 3  
 Weight: .7 lb. approx.  
 Power: Directly connected to engine

Range	P/N
10 to 35 in. Hg.	N-1000-3
10 to 50 in. Hg.	N-1000-1
10 to 60 in. Hg.	N-1000-2
10 to 75 in. Hg.	N-1000-4
15 to 100 in. Hg.	N-1000-5



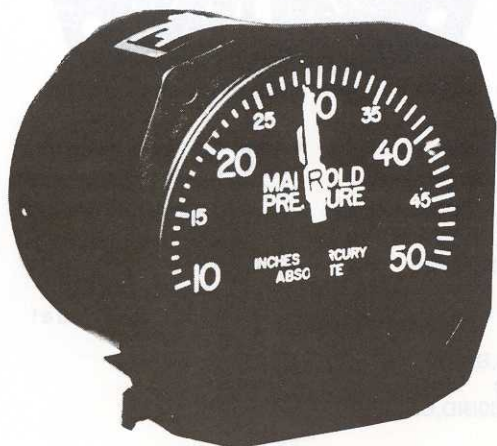
## Manifold Pressure Dual

### N-2000

This manifold pressure gauge comprises two absolute pressure bellows assemblies separately connected to two independent concentric pointers, to enable two engines to be set to the same power setting. Interchangeable with AN5770-2.

Dim: 3-1/8 x 3-1/8 x 3  
 Weight: .8 lb. approx.  
 Directly connected to engine

Range	Pointers	P/N
10 to 50 in. Hg.	1 & 2	N-2000-1
10 to 60 in. Hg.	1 & 2	N-2000-2
10 to 50 in. Hg.	R & L	N-2000-3
10 to 60 in. Hg.	R & L	N-2000-4
10 to 75 in. Hg.	R & L	N-2000-5
15 to 100 in. Hg.	1 & 2	N-2000-6



## Manifold Pressure — 2"

### N-1005

A 2" diameter manifold pressure gauge indicating manifold pressure by means of a single pointer traversing a scale arc of approximately 270°.

Dim: 2-1/4 x 2-1/4 x 1-3/4  
 Weight: .5 lbs.  
 Range: 10 to 50 in. Hg.  
 Power: Directly connected to engine



## Fuel Pressure Single — 3"

### H-1000

This gauge has a bellows type mechanism housed in a 3" dia. case to accurately indicate the fuel pump pressure from the engine. Unit suitable for use in a pressurized aircraft.

Dim: 3-1/8 x 3-1/8 x 3  
 Weight: .8 lb. approx.  
 Power: Connected directly to engine  
 P/N H-1000 - Range 0-25 p.s.i.d.



## Fuel Pressure/Fuel Flow (Autosyn) H-437 Not Pictured.

High accuracy indicator of the autosyn type, intended to be used with transmitter P/N H-2300.

Copy of Flow Chart from engine manual must accompany order if correct Fuel Flow markings are to be furnished. Also advise if pounds per hour or gallons per hour markings are desired.

Dim: 3-1/8 x 3-1/8 x 5-1/2  
 Weight: Approx. 1.3 lbs.  
 Power: 26 VAC, 400 Hz, 1 ph.  
 Range: 0 to 25 p.s.i.d.  
 Connector: MS3106A-16S-1S

## Fuel Pressure Dual — 3"

### H-2000

Two bellows type mechanisms are housed in a 3" dia. case to give simultaneous indicators of fuel pump pressure from two engines. Interchangeable with AN5772-1.

Dim: 3-1/8 x 3-1/8 x 3  
 Weight: 1 lb. approx.  
 Power: Directly connected to two engines  
 Range: 0 to 25 p.s.i.d.



STANDARD DIAL COLOR IS WHITE. YELLOW AND PALE GREEN AVAILABLE AS WELL AS RANGE MARKS TO YOUR SPECIFICATIONS.