

# AIRSPEED INDICATORS

AIRSPEED INDICATORS CAN BE ORDERED WITH RANGE MARKS FOR AN ADDITIONAL CHARGE



## Airspeed Sensitive B-1000

The sensitive airspeed indicates 100 MPH, or Knots, with each revolution of the pointer around the main dial, and multiples of 100 in the secondary dial in the upper half of the main dial.

Dim: 3-1/8 x 3-1/8 x 2-1/2  
 Weight: 1 lb. approx.  
 Power: Aircraft pitot-static system  
 Range: 50 to 700 MPH B-1000  
 50 to 600 KNOTS B-1000-1

## Airspeed B-1002-1

The airspeed indicator is an instrument which senses the pressure generated by the movement of air into the pitot tube, and the pressure (static) of the surrounding air mass. The difference in these two pressures causes the movement of a pointer over a dial marked in units of airspeed. The standard instrument carries an outer scale marked MPH and an inner scale marked KNOTS.

Dim: 3-1/8 x 3-1/8 x 2-1/8  
 Weight: .6 lbs. approx.  
 Power: Pitot-static connections  
 Range: 40 to 180 MPH  
 40 to 160 KNOTS



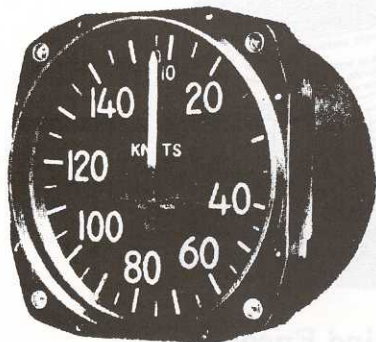
## Airspeed B-1002-2

Same as above, except has a range of 40 to 200 MPH and 40 to 170 KNOTS.

## Airspeed B-1002-3

Same as above, except has a range of 40 to 300 MPH and 40 to 260 KNOTS.

P/N B-1004-1 (Reverse Dial-Knots Outside-MPH Inside)



## Airspeed Helicopter B-1001 K

This airspeed indicator is intended for helicopter use. If MPH or Dual Scale is required specify when ordering.

Dim: 3-1/8 x 3-1/8 x 2-1/4  
 Weight: 3/4 lb. approx.  
 Power: Aircraft pitot static system  
 Range: 10 to 170 MPH B-1001-4  
 10 to 150 KNOTS B-1001K  
 Combination MPH outer dial B-1001-1  
 Combination KNOTS outer dial B-1001-2



## Airspeed B-1005

Same basic airspeed as B-1002 except as described below:

Dim: 3-1/8 x 3-1/8 x 2-1/4  
 Weight: .60 lb.  
 Range: 40 - 260 Kts.